



PORTABLE HD ENDOSCOPY UNIT SKP-FHD-1080



+254 725 295 671



info@larioxhealth.com



www.larioxhealth.com

PORTABLE HD ENDOSCOPY UNIT

SKP-FHD-1080

The Portable Endoscopy is an advanced device which enables a surgeon the ease of mobility along with compact All-in-One unit allowing enhanced HD imagery having in-built light source, full HD camera, high aspect medical grade monitor display and integrated HD recorder.

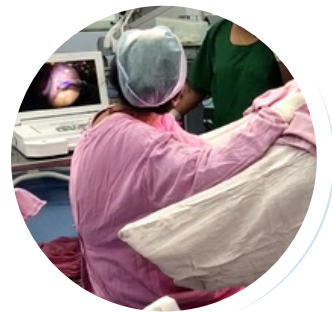
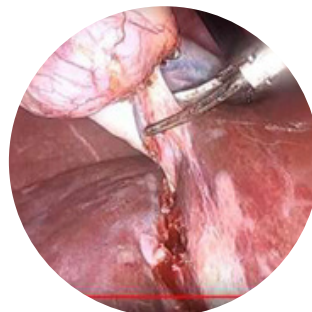
TECHNICAL DATA

- **Camera Head** : 1 X 1/3 Cmos
- **Screen Size** : 17.3 Inches
- **Aspect Ratio** : 16:9
- **Resolution** : 1920 X 1080 P
- **Head Keys:** Four Programmable Camera Head Keys
- **Digital Magnification:** Up to 10x
- **Led Light Source:** focus coherent lens technology
- **Video Output** : 1xHDMI
- **Voltage Range** : 100-240V (60VA)
- **Frequency** : 50-60 Hz



PRODUCT FEATURES

- Full High Definition 1920 x 1080 Pixels.
- Built-in-video image recording.
- Medical Grade full HD Monitor.
- Programmable head keys.
- Anywhere portability, highly compact.
- Pre set mode for various specialties.
- Suitable for diagnosis and surgeries.
- Digital 1-CMOS Full HD Camera Console.
- Digital Zoom with freeze feature for illustration.
- Built-in- LED light source.



ORDERING DATA

SKP-FHD-1080: Digital 1-CMOS FHD Camera Console With inbuilt USB recording system, Camera Cable with head, Focusable coupler, HDMI-HDMI-Cable, Power Cord, Power Adaptor, Briefcase & User Manual